

Pulp and Paper Moved by Rail in the Chicago Region

INTRODUCTION

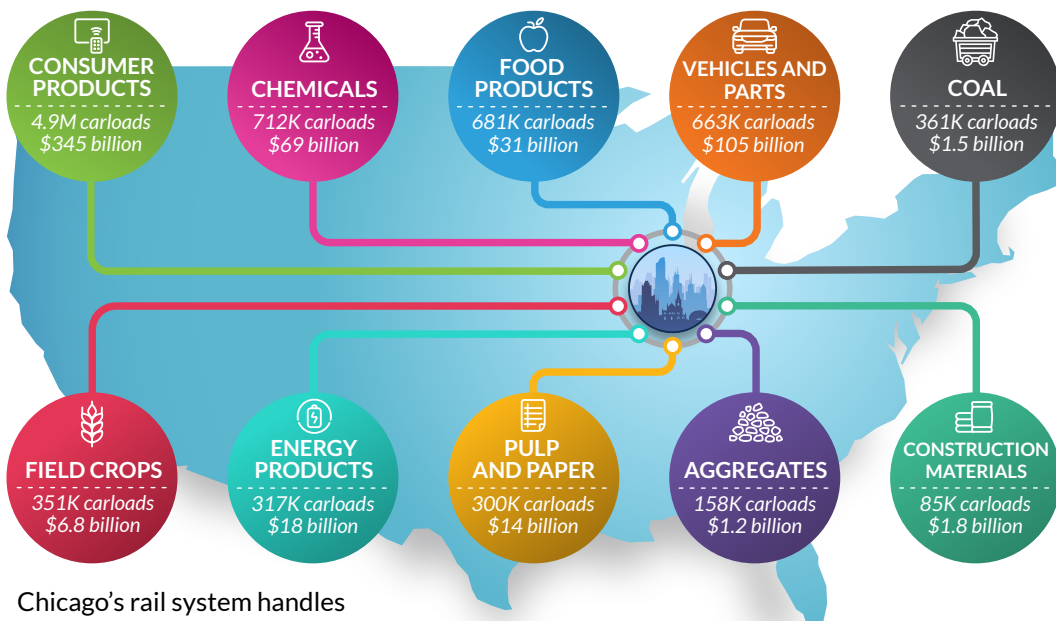
Chicago's critical location in the North American railroad network has made it the nation's rail hub for more than a century. The Chicago region currently handles nearly half of intermodal rail containers and nearly a third of all carload rail freight in the U.S. The Chicago Region Environmental and Transportation Efficiency (CREATE) Program is implementing critically needed improvements to Chicago's rail infrastructure through a unique partnership between the U.S. Department of Transportation, State of Illinois, Cook County, City of Chicago, Metra Commuter Rail, Amtrak, and the nation's largest freight railroads. Like the railroad network that converges in Chicago, CREATE's benefits extend throughout the country and across industries. This fact sheet highlights how Chicago's rail infrastructure supports the pulp and paper industry.

CHICAGO REGION TOP COMMODITIES BY RAIL

WHY RAIL IS IMPORTANT

Rail is the most sustainable way to move people and freight:

- Rail is **4 times** more fuel efficient than trucks
- One train can carry the equivalent freight of **hundreds of trucks**
- 1 gallon of fuel can move 1 ton of rail freight **over 480 miles**



Chicago's rail system handles
47% OF INTERMODAL RAIL CONTAINERS
& 29% OF RAIL CARS IN THE U.S.
\$652 BILLION WORTH OF GOODS EACH YEAR

Source: Annual Carloads and Value, 2019 STB Confidential Waybill Sample.

CHICAGO'S RAIL INFRASTRUCTURE SUPPORTS:

24% of all pulp and paper by tonnage that travels by rail in the U.S. through Chicago.



Top three origin or destination states for pulp and paper rail traffic:

1. Wisconsin
2. Illinois
3. California



60% of containerized (intermodal) pulp and paper rail traffic in the U.S.



18% of carload pulp and paper rail traffic in the U.S.

