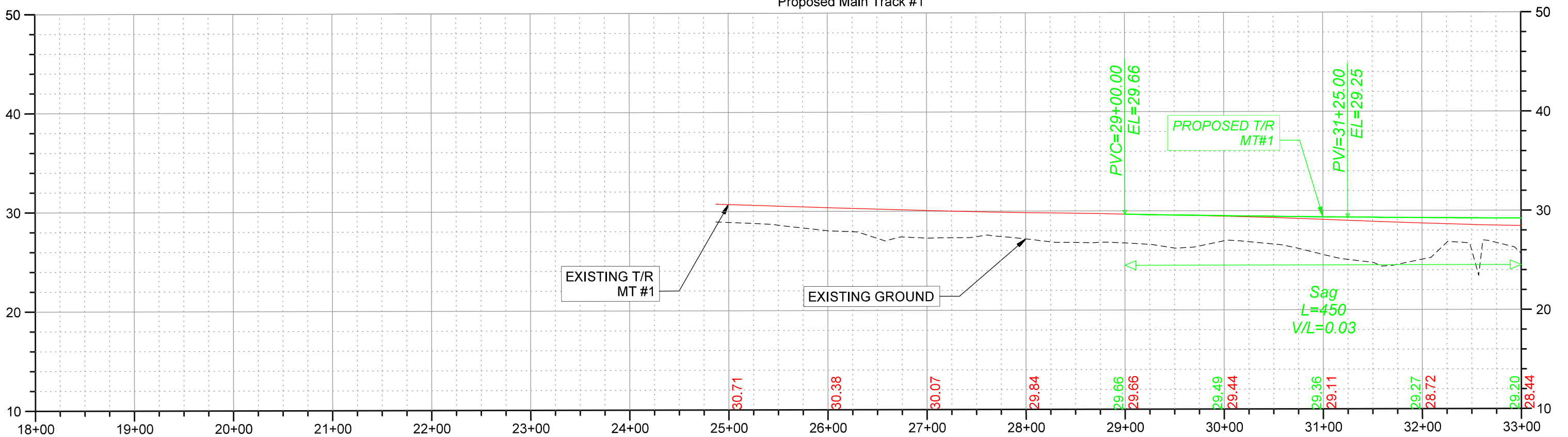
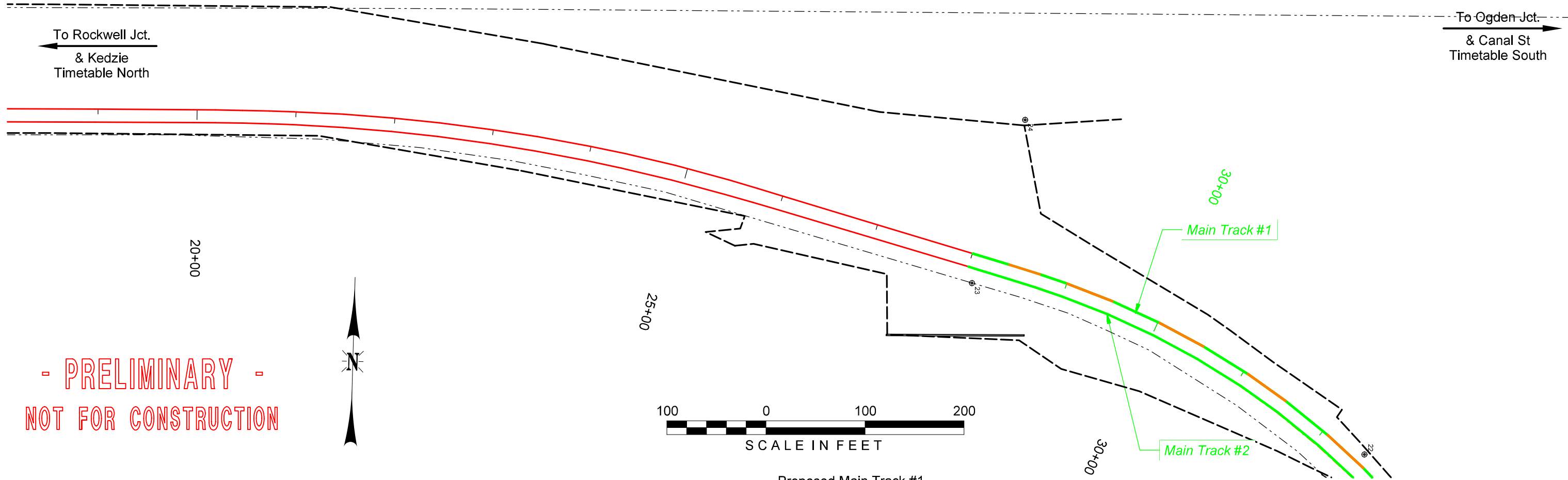


c:\pwwordir\benesch_projects\projects\swilliams\dms49014\UPRR.tb1
 c:\pwwordir\benesch_projects\projects\swilliams\dms49014\UPRR.tb1
 G:\pwwordir\benesch_projects\projects\swilliams\dms54009\PH-54.dgn
 1/19/2021

To Rockwell Jct.
 & Kedzie
 Timetable North

To Ogden Jct.
 & Canal St
 Timetable South

- PRELIMINARY -
 NOT FOR CONSTRUCTION



Alfred Benesch & Company
 1230 East Diehl Road, Suite 109
 Naperville, IL 60563
 312-565-0450 Job No. 210070.11



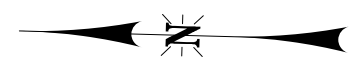
DRAWN BY: SDW
 CHECKED BY: BAT
 DATE: 1/19/2021
 SHEET NUMBER: PH77 of 91

UNION PACIFIC RAILROAD
 LOCATION & DESCRIPTION: CHICAGO, IL
 ROCKWELL SUBDIVISION MP 0.18 - MP 2.68
 WA-1
 SHEET TITLE: FINAL MT #1 PLAN & PROFILE

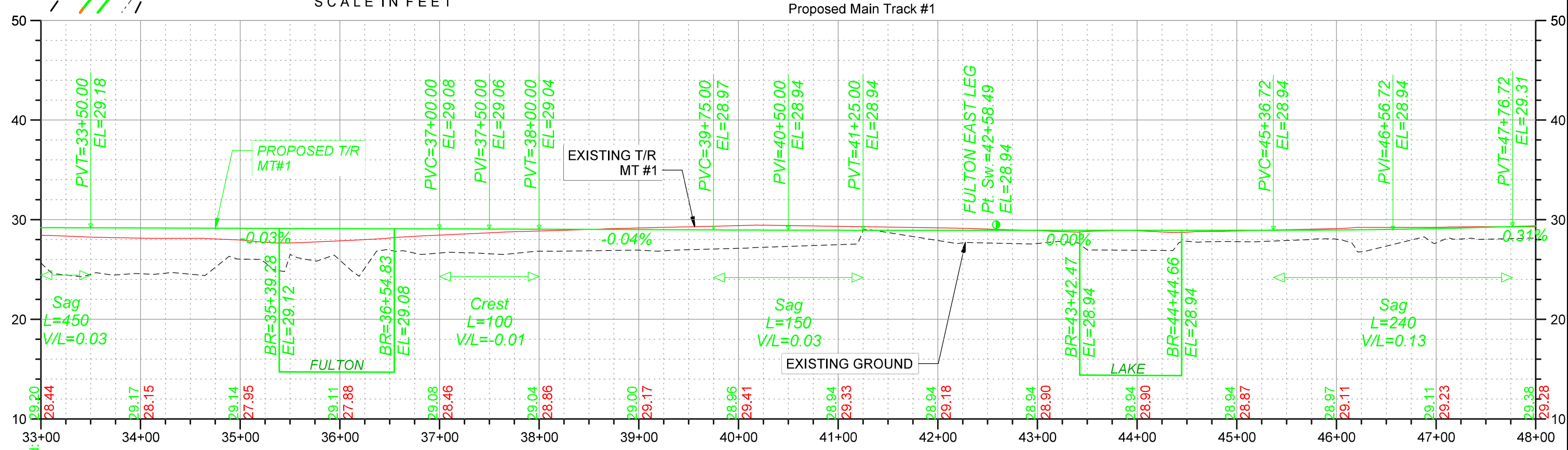
c:\pwwordir\benesch_projects\projects\williams\dms49014\UPRR.tb1
 c:\pwwordir\benesch_projects\projects\williams\dms49014\UPRR.tb1
 G:\pwwordir\benesch_projects\projects\williams\dms49014\UPRR.tb1
 1/19/2021

To Rockwell Jct.
 & Kedzie
 Timetable North

To Ogden Jct.
 & Canal St
 Timetable South

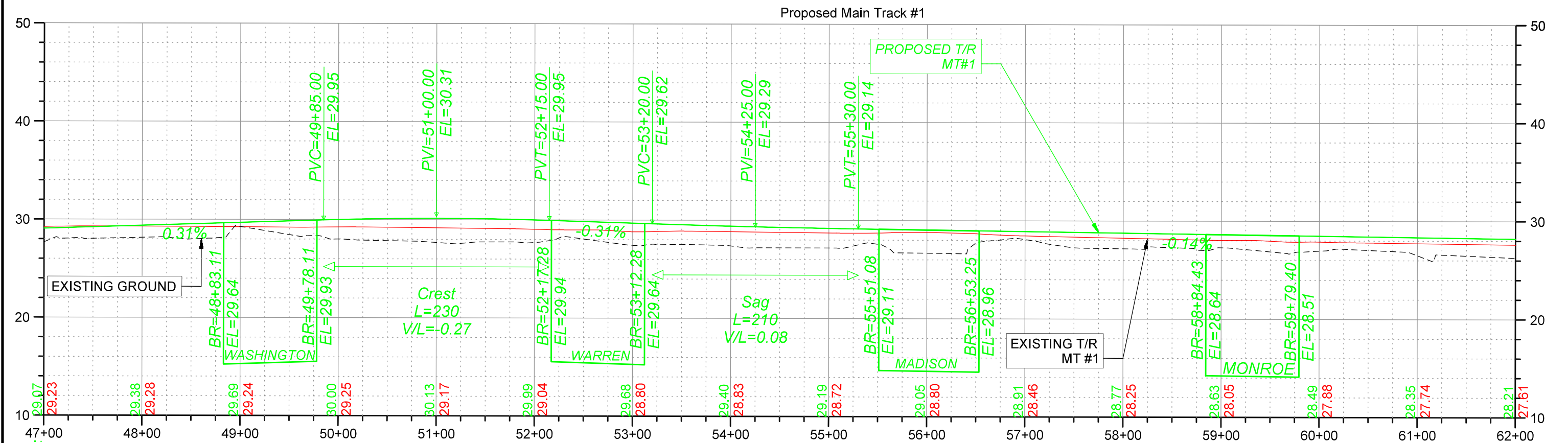
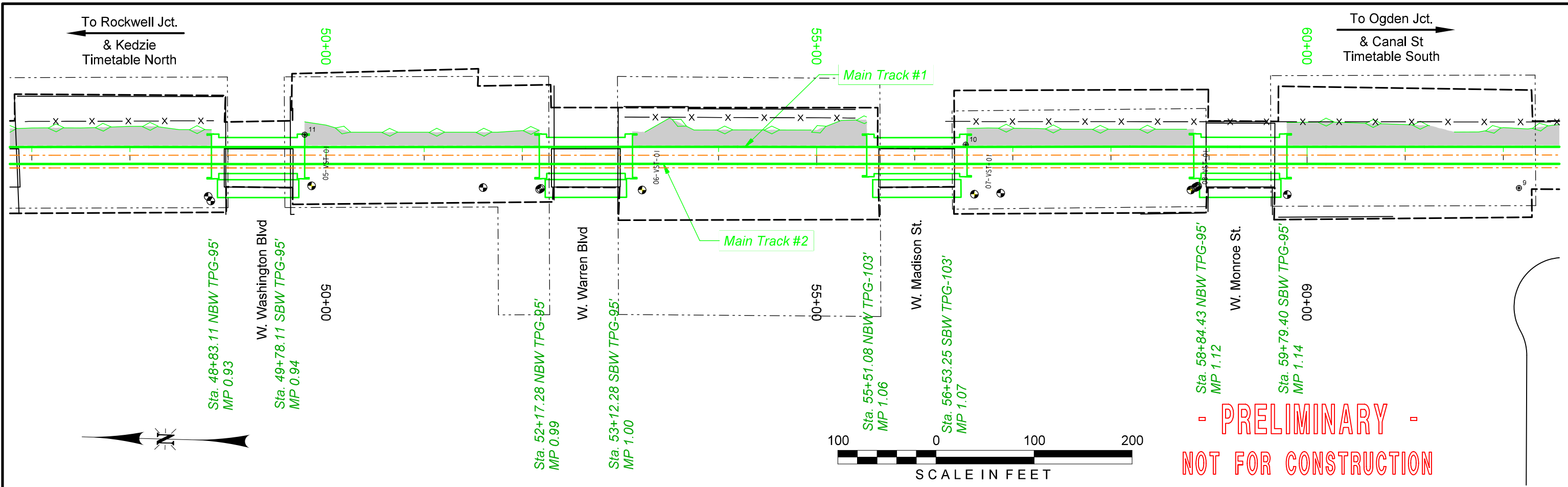


PRELIMINARY
NOT FOR CONSTRUCTION



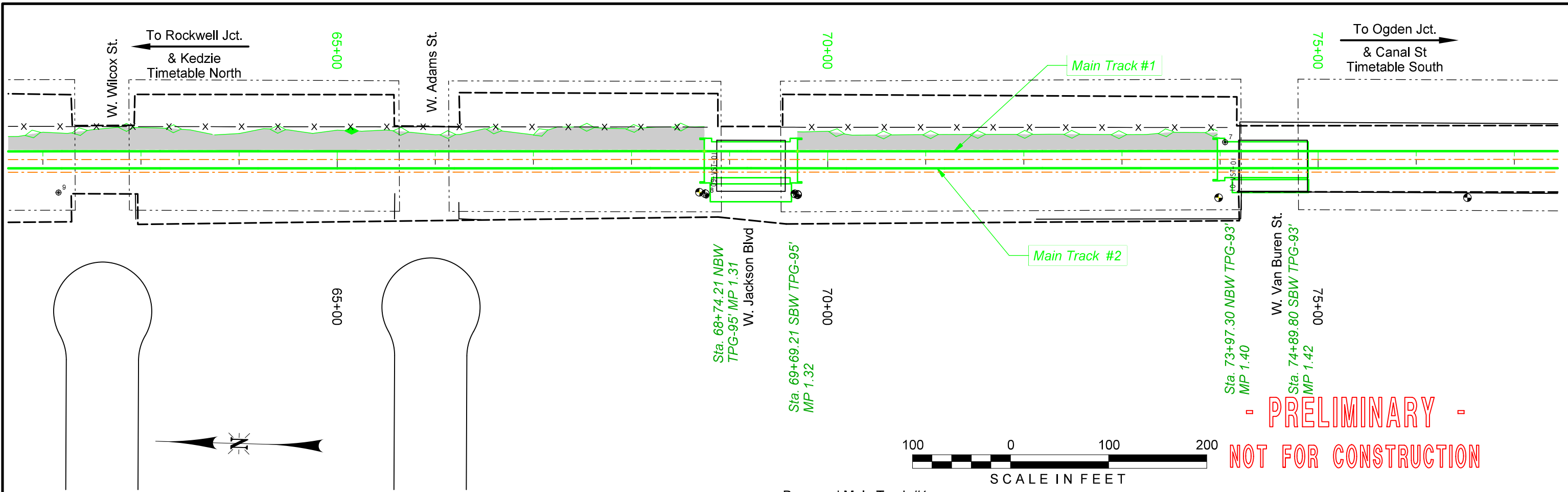
 Alfred Benesch & Company 1230 East Diehl Road, Suite 109 Naperville, IL 60563 312-565-0450 Job No. 210070.11		DRAWN BY: SDW	UNION PACIFIC RAILROAD LOCATION & DESCRIPTION: CHICAGO, IL ROCKWELL SUBDIVISION MP 0.18 - MP 2.68 WA-1
		CHECKED BY: BAT	
		DATE: 1/19/2021	
		SHEET NUMBER PH78 of 91	
SHEET TITLE: FINAL MT #1 PLAN & PROFILE			

c:\pwwordir\benesch_projects\projects\williams\dms49014\UPRR.tb1
 c:\pwwordir\benesch_projects\projects\williams\dms210000s\2100070.11\Engineering Docs\UPRR Track\Printing\210070.11 Color_Half_UP.tb1
 G:\pwwordir\benesch_projects\projects\williams\dms54009\PH-56.dgn
 Date: 1/19/2021

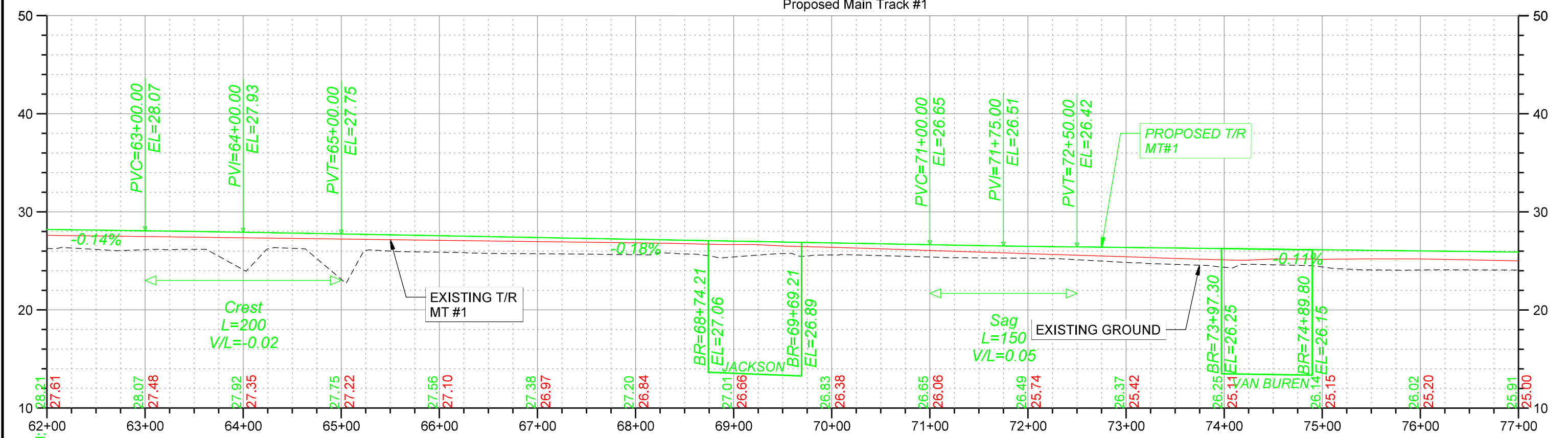


<p>Alfred Benesch & Company 1230 East Diehl Road, Suite 109 Naperville, IL 60563 312-565-0450 Job No. 210070.11</p>		DRAWN BY: SDW CHECKED BY: BAT DATE: 1/19/2021 SHEET NUMBER: PH79 of 91	UNION PACIFIC RAILROAD LOCATION & DESCRIPTION: CHICAGO, IL ROCKWELL SUBDIVISION MP 0.18 - MP 2.68 WA-1 SHEET TITLE: FINAL MT #1 PLAN & PROFILE
----------------------------------------------------------------------------------------------------------------------------------------------------------------	--	---------------------------------------------------------------------------------	-------------------------------------------------------------------------------------------------------------------------------------------------------------------

c:\pwwordir\benesch_projects\projects\swilliams\dms49014\UPRR.tb1
 c:\pwwordir\benesch_projects\projects\swilliams\dms49014\UPRR.tb1
 G:\pwwordir\benesch_projects\projects\swilliams\dms49014\UPRR.tb1
 1/19/2021

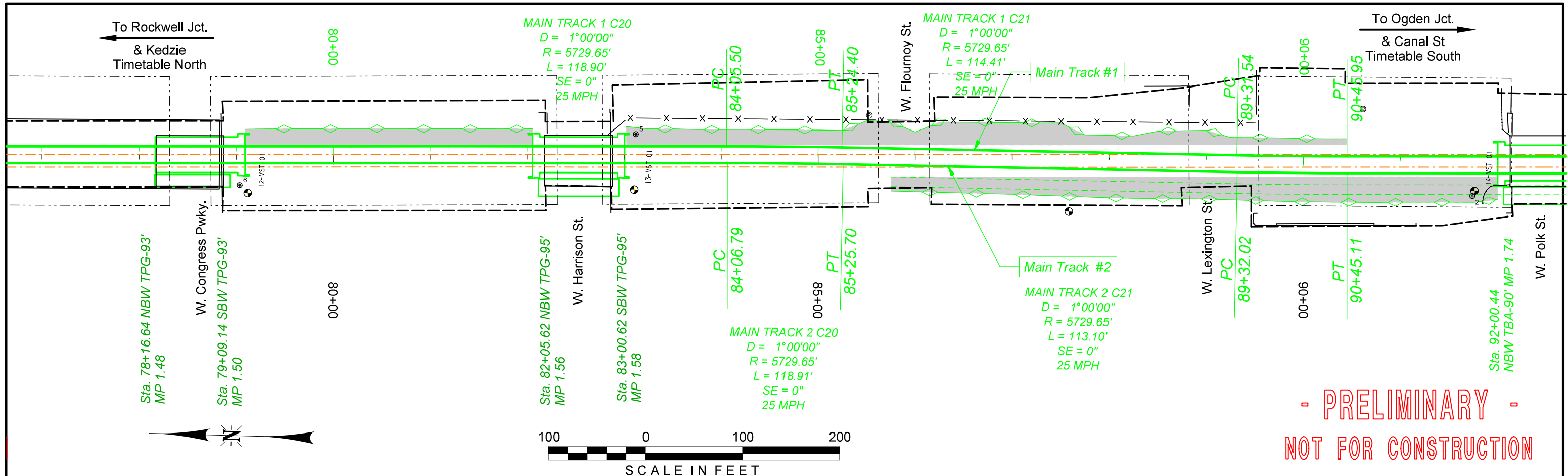


- PRELIMINARY -
NOT FOR CONSTRUCTION

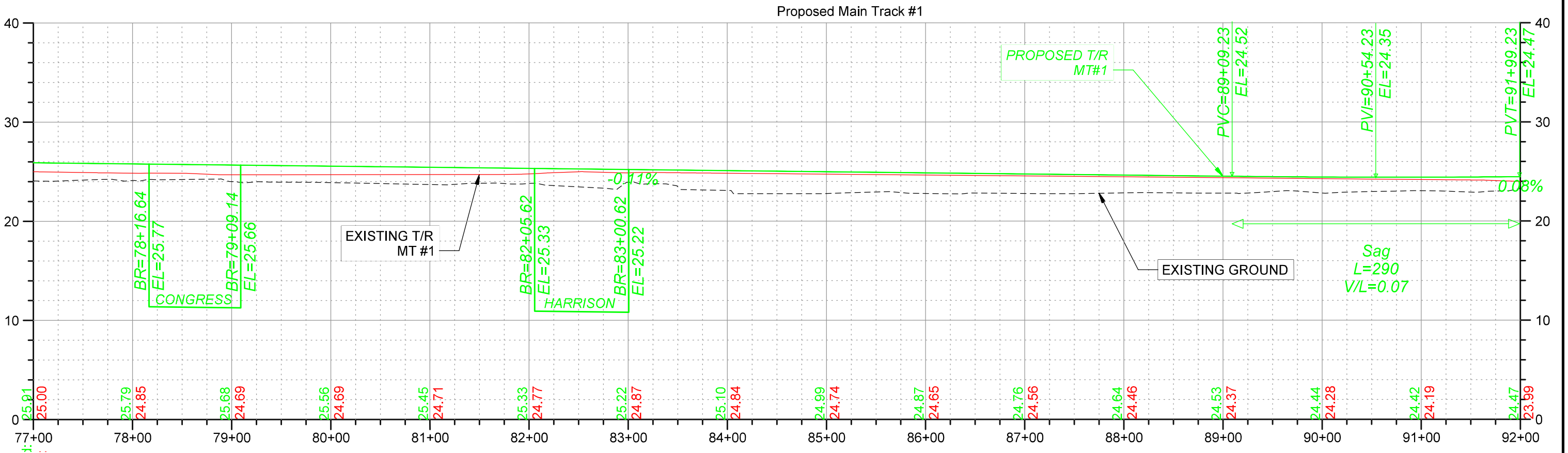


 Alfred Benesch & Company 1230 East Diehl Road, Suite 109 Naperville, IL 60563 312-565-0450 Job No. 210070.11		DRAWN BY: SDW	UNION PACIFIC RAILROAD LOCATION & DESCRIPTION: CHICAGO, IL ROCKWELL SUBDIVISION MP 0.18 - MP 2.68 WA-1 SHEET TITLE: FINAL MT #1 PLAN & PROFILE
		CHECKED BY: BAT	
		DATE: 1/19/2021	
		SHEET NUMBER: PH80 of 91	

c:\pwwordir\benesch_projects\projects\swilliams\dms49014\UPRR.tb1
 c:\pwwordir\benesch_projects\projects\swilliams\dms49014\UPRR.tb1
 G:\pwwordir\benesch_projects\projects\swilliams\dms49014\UPRR.tb1
 1/19/2021

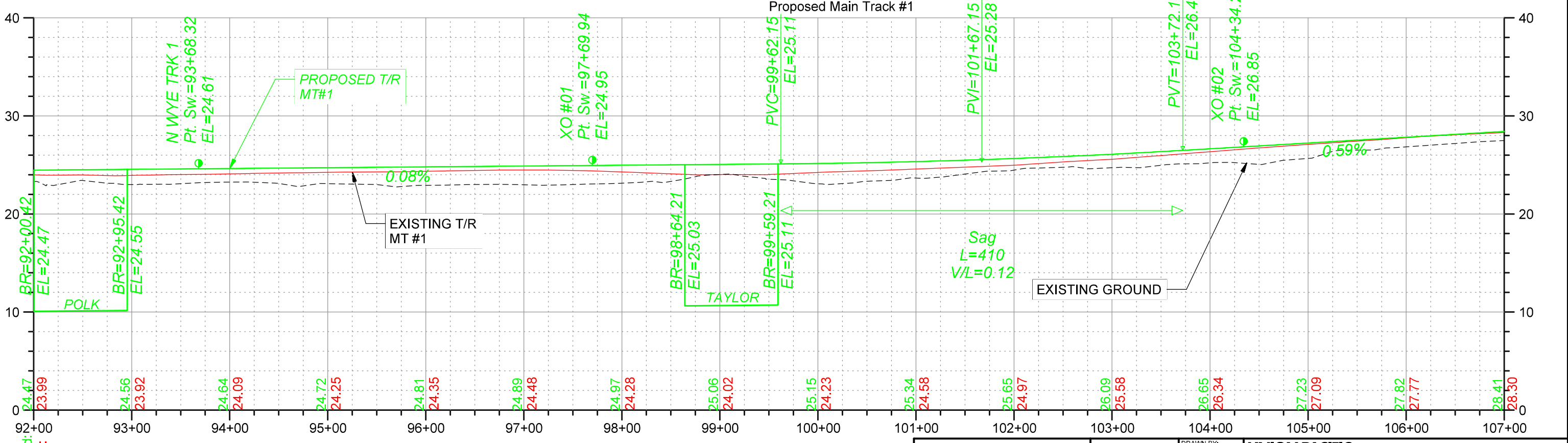
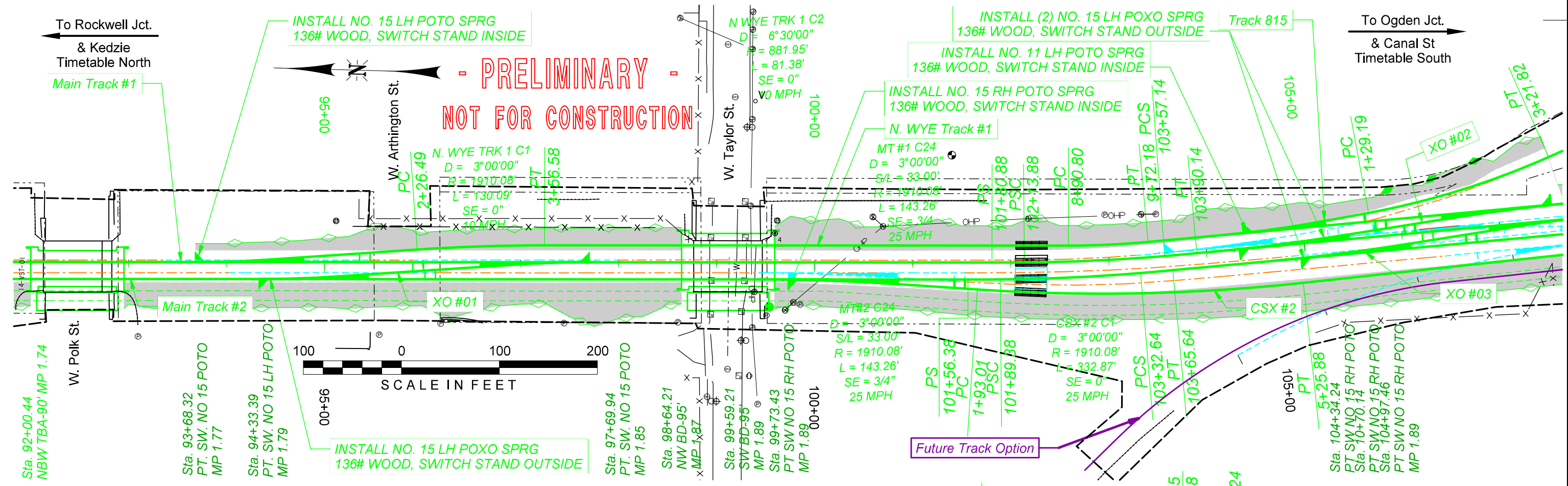


- PRELIMINARY -
 NOT FOR CONSTRUCTION



 Alfred Benesch & Company 1230 East Diehl Road, Suite 109 Naperville, IL 60563 312-565-0450 Job No. 210070.11		DRAWN BY: SDW	UNION PACIFIC RAILROAD LOCATION & DESCRIPTION: CHICAGO, IL ROCKWELL SUBDIVISION MP 0.18 - MP 2.68 WA-1 SHEET TITLE: FINAL MT #1 PLAN & PROFILE
		CHECKED BY: BAT	
		DATE: 1/19/2021	
		SHEET NUMBER: PH81of91	

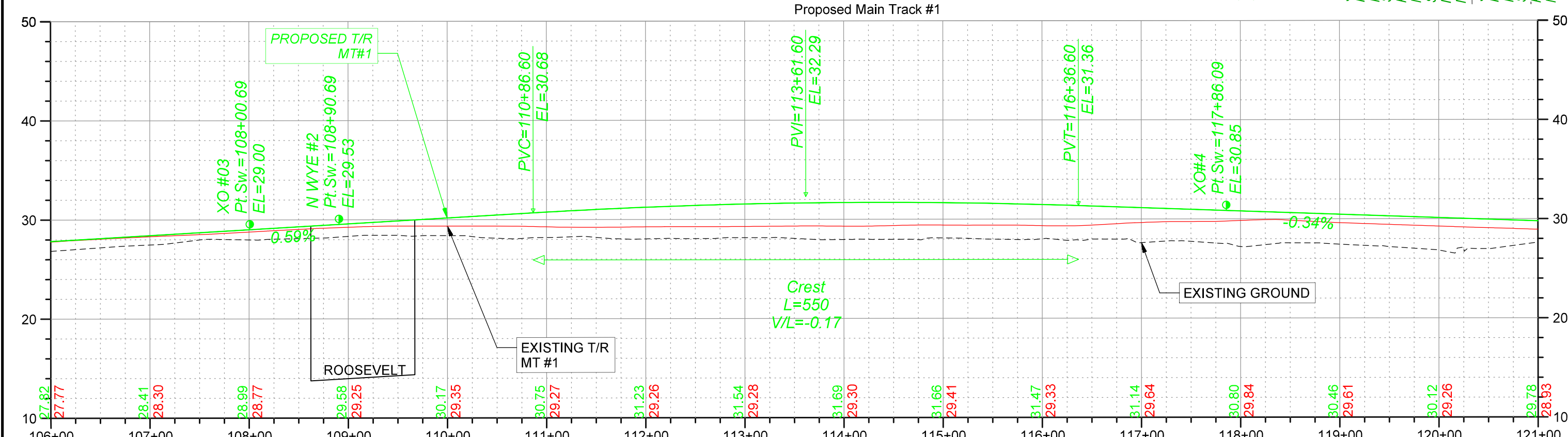
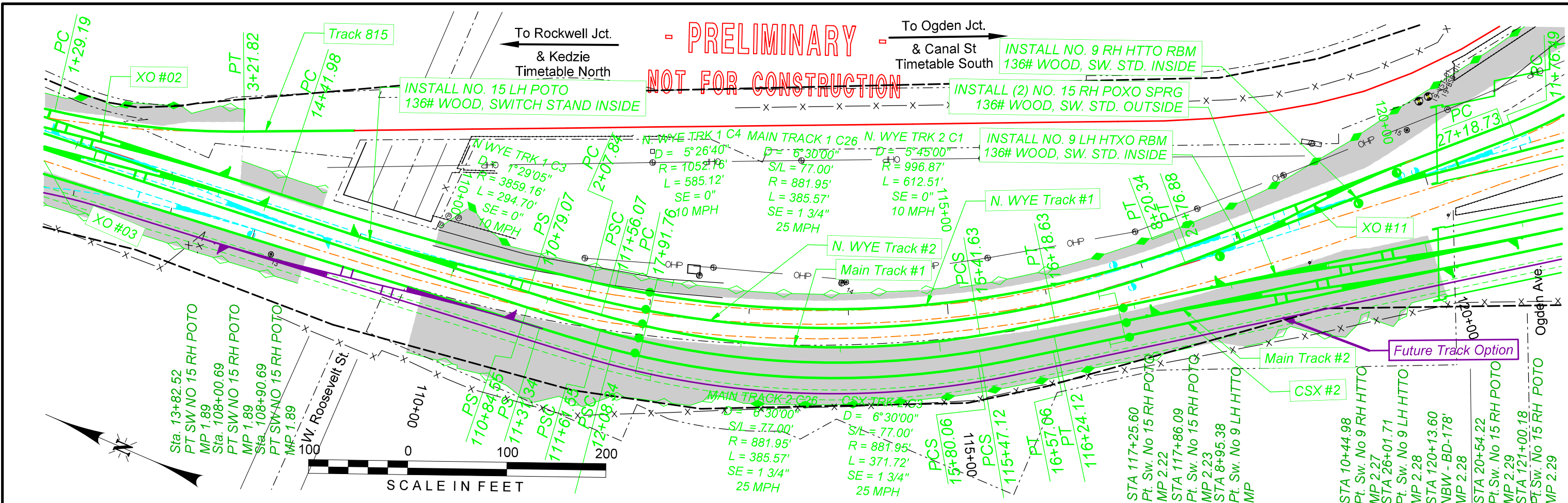
c:\pwwordir\benesch\projects\swilliams\dms49014\UPRR.tb1
 c:\pwwordir\benesch\projects\swilliams\dms49014\UPRR.tb1
 G:\pwwordir\benesch\projects\swilliams\dms49014\UPRR.tb1
 1/19/2021



 Alfred Benesch & Company 1230 East Diehl Road, Suite 109 Naperville, IL 60563 312-565-0450 Job No. 210070.11		DRAWN BY: SDW	UNION PACIFIC RAILROAD LOCATION & DESCRIPTION: CHICAGO, IL ROCKWELL SUBDIVISION MP 0.18 - MP 2.68 WA-1 SHEET TITLE: FINAL MT #1 PLAN & PROFILE
		CHECKED BY: BAT	
		DATE: 1/19/2021	
		SHEET NUMBER: PH82 of 91	

c:\pwwordir\benesch_projects\projects\swilliams\dms49014\UPRR.tb1
 c:\pwwordir\benesch_projects\projects\swilliams\dms49014\UPRR.tb1
 G:\pwwordir\benesch_projects\projects\swilliams\dms49014\UPRR.tb1
 Def: aut
 1/19/2021

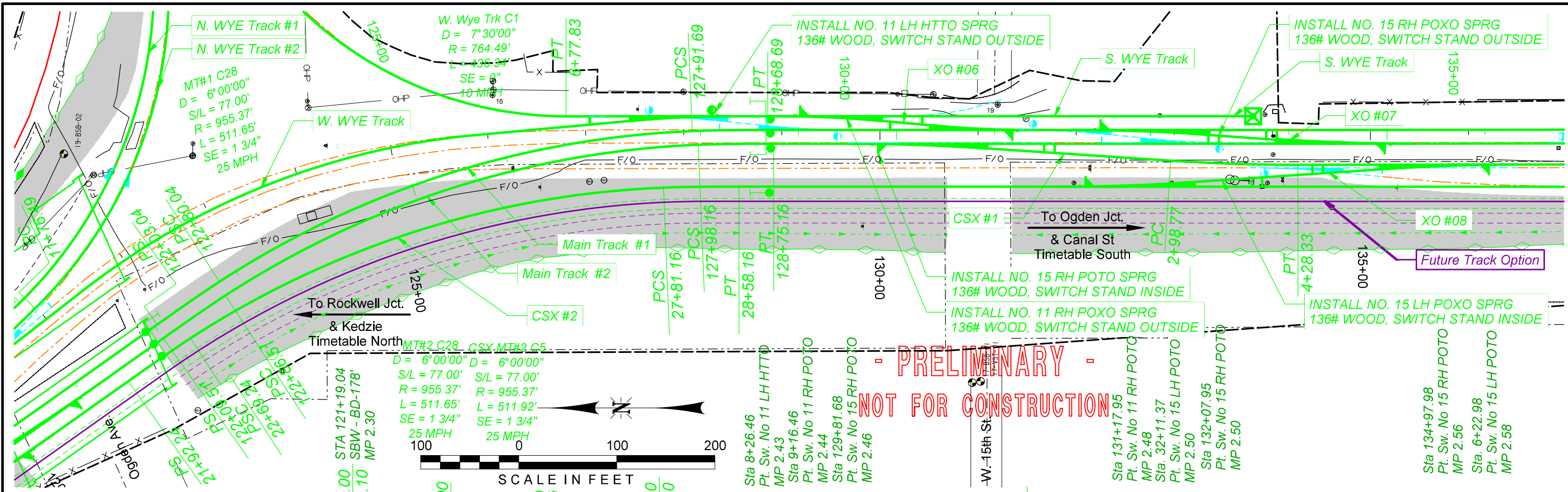
- PRELIMINARY -
NOT FOR CONSTRUCTION



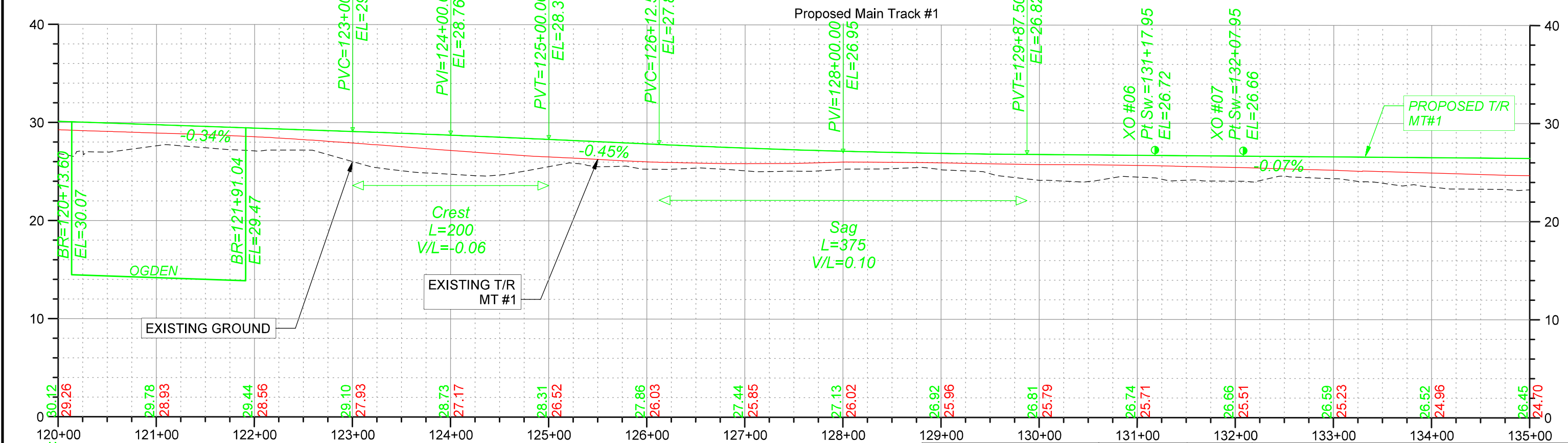
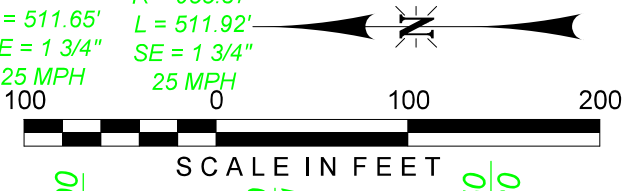
Station	Proposed Elevation (ft)	Existing Elevation (ft)
106+82	27.82	27.77
107+00	28.41	28.30
108+00	28.99	28.77
109+00	29.58	29.25
110+00	30.17	29.35
111+00	30.75	29.27
112+00	31.23	29.26
113+00	31.54	29.28
114+00	31.69	29.30
115+00	31.66	29.41
116+00	31.47	29.33
117+00	31.14	29.64
118+00	30.80	29.84
119+00	30.46	29.61
120+00	30.12	29.26
121+00	29.78	28.93

<p>Alfred Benesch & Company 1230 East Dlehl Road, Suite 109 Naperville, IL 60563 312-565-0450 Job No. 210070.11</p>		DRAWN BY: SDW CHECKED BY: BAT DATE: 1/19/2021 SHEET NUMBER: PH83 of 91	UNION PACIFIC RAILROAD LOCATION & DESCRIPTION: CHICAGO, IL ROCKWELL SUBDIVISION MP 0.18 - MP 2.68 WA-1 SHEET TITLE: FINAL MT #1 PLAN & PROFILE
----------------------------------------------------------------------------------------------------------------------------------------------------------------	--	---------------------------------------------------------------------------------	-------------------------------------------------------------------------------------------------------------------------------------------------------------------

c:\pwordir\benesch_projects\projects\swilliams\dms49014\UPRR.tb1
 c:\pwordir\benesch_projects\projects\swilliams\dms49014\UPRR.tb1
 G:\pwordir\benesch_projects\projects\swilliams\dms49014\UPRR.tb1
 1/19/2021

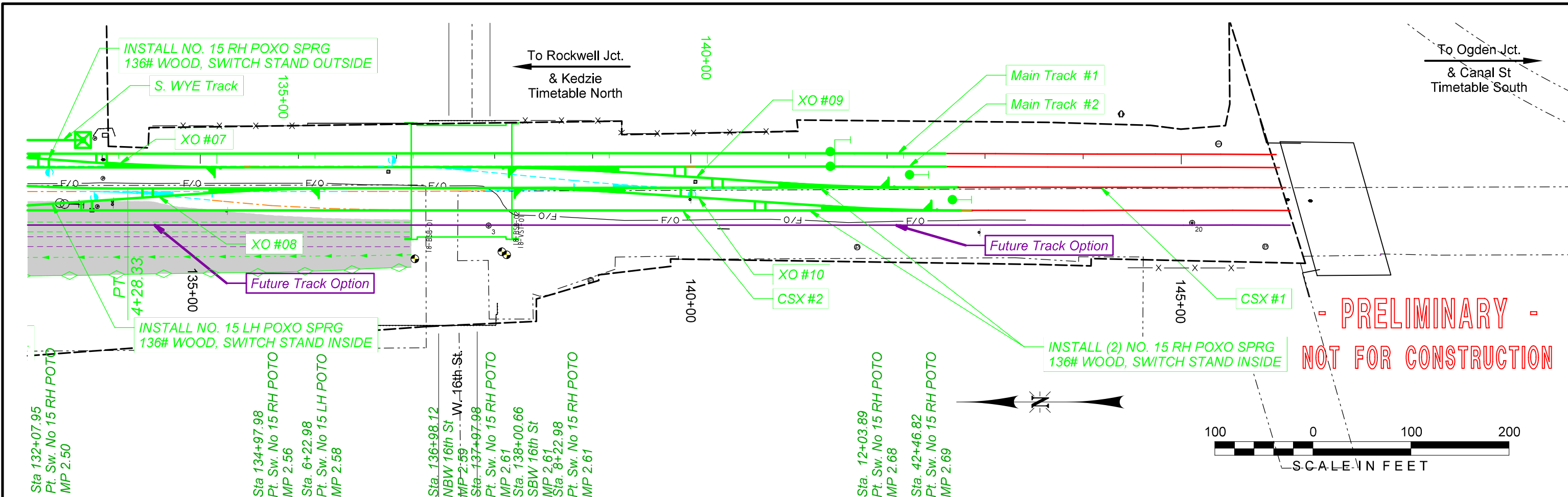


- PRELIMINARY -
NOT FOR CONSTRUCTION

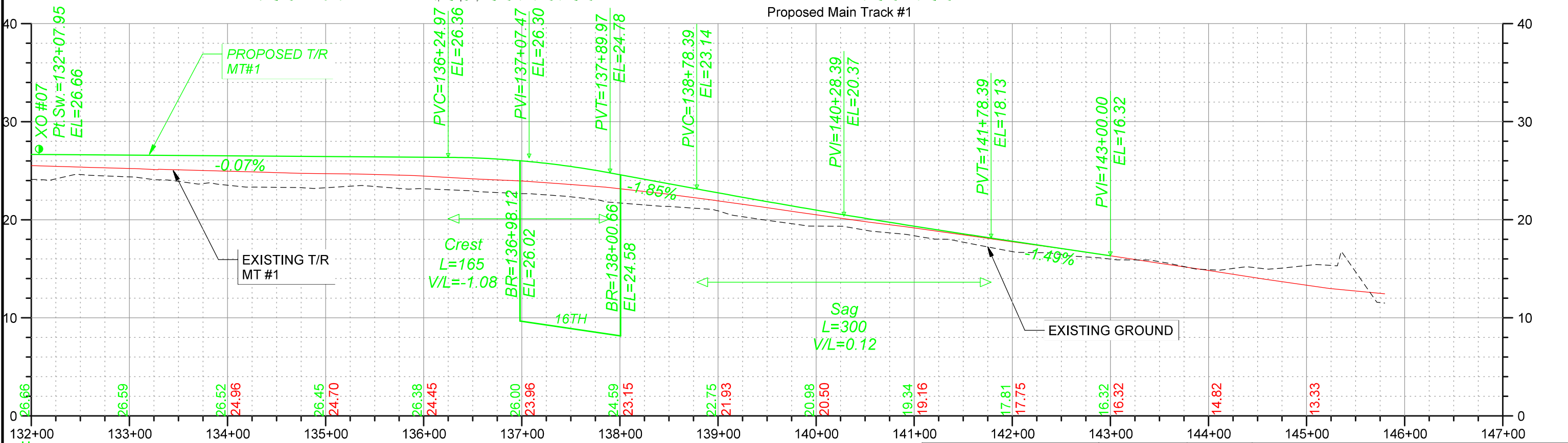


 Alfred Benesch & Company 1230 East Diehl Road, Suite 109 Naperville, IL 60563 312-565-0450 Job No. 210070.11		DRAWN BY: SDW CHECKED BY: BAT DATE: 1/19/2021 SHEET NUMBER: PH84 of 91	UNION PACIFIC RAILROAD LOCATION & DESCRIPTION: CHICAGO, IL ROCKWELL SUBDIVISION MP 0.18 - MP 2.68 WA-1 SHEET TITLE: FINAL MT #1 PLAN & PROFILE
---------------------------------------------------------------------------------------------------------------------------	--	---------------------------------------------------------------------------------	-------------------------------------------------------------------------------------------------------------------------------------------------------------------

c:\pwwordir\benesch_projects\projects\williams\dms49014\UPRR.tb1
 c:\pwwordir\benesch_projects\projects\williams\dms49014\UPRR.tb1
 G:\pwwordir\benesch_projects\projects\williams\dms49014\UPRR.tb1
 1/19/2021

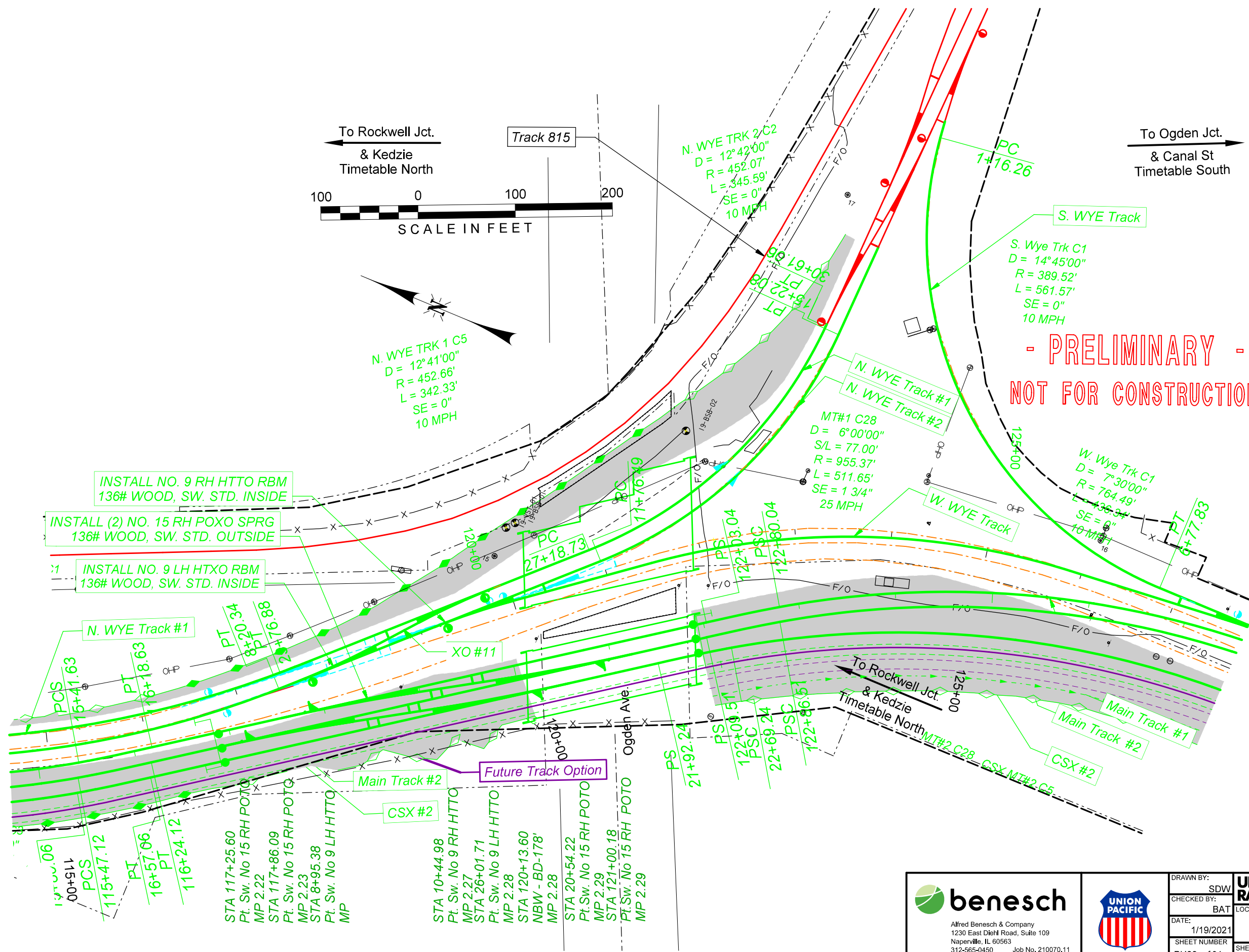
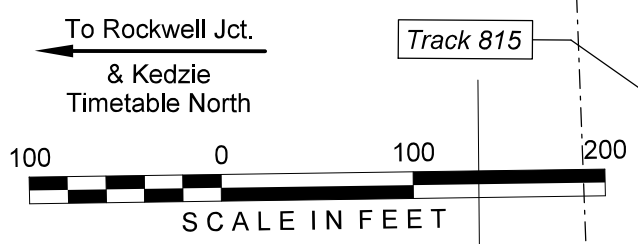


- PRELIMINARY -
NOT FOR CONSTRUCTION



 Alfred Benesch & Company 1230 East Diehl Road, Suite 109 Naperville, IL 60563 312-565-0450 Job No. 210070.11		DRAWN BY: SDW CHECKED BY: BAT DATE: 1/19/2021 SHEET NUMBER: PH85 of 91	UNION PACIFIC RAILROAD LOCATION & DESCRIPTION: CHICAGO, IL ROCKWELL SUBDIVISION MP 0.18 - MP 2.68 WA-1 SHEET TITLE: FINAL MT #1 PLAN & PROFILE
---------------------------------------------------------------------------------------------------------------------------	--	---------------------------------------------------------------------------------	-------------------------------------------------------------------------------------------------------------------------------------------------------------------

c:\pwwordir\benesch_projects\projects\swilliams\dms49014\UPRR.tb1
 c:\pwwordir\benesch_projects\projects\swilliams\dms49014\UPRR.tb1
 c:\pwwordir\benesch_projects\projects\swilliams\dms49014\UPRR.tb1
 c:\pwwordir\benesch_projects\projects\swilliams\dms49014\UPRR.tb1
 c:\pwwordir\benesch_projects\projects\swilliams\dms49014\UPRR.tb1
 1/19/2021



- PRELIMINARY -
NOT FOR CONSTRUCTION

benesch
 Alfred Benesch & Company
 1230 East Diehl Road, Suite 109
 Naperville, IL 60563
 312-565-0450 Job No. 210070.11



DRAWN BY: SDW
 CHECKED BY: BAT
 DATE: 1/19/2021
 SHEET NUMBER: PH86 of 91

UNION PACIFIC RAILROAD	
LOCATION & DESCRIPTION:	CHICAGO, IL ROCKWELL SUBDIVISION MP 0.18 - MP 2.68 WA-1
SHEET TITLE:	FINAL PLAN WYE